

New Product

**SURFACE MOUNT
SHIELDED POWER INDUCTOR
SERIES SDE1316**

FEATURES

- RoHS compliant
- Hybrid materials technology for a unique construction
- Ideal for use in high-power, high-rel systems
- Suitable as a "drop-in" replacement for many competitive designs

ELECTRICAL SPECIFICATIONS

- Inductance range 10uH to 470uH
- Test condition 0.1Vrms @ 1kHz
- Test equipment Quadtech 1750 LCR Meter

PHYSICAL SPECIFICATIONS

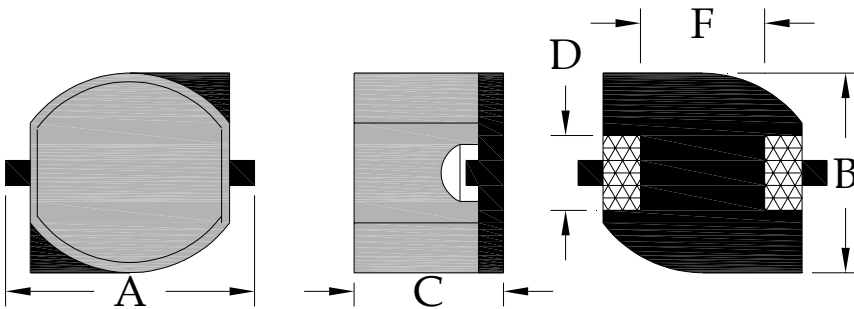
- Operating temp. -25°C to +125°C
- Core Ferrite
- Packaging T & R 500 pieces per reel
- Tape & reel spec. Tape 24 mm embossed carrier
- Reel 330 mm dia

Dimensions in millimeters

- Length A 12.5 max
- Width B 10.1 ± 0.3
- Height C 5.7 ± 0.3
- Terminal width D 3.0 ± 0.2
- Term spacing F 5.6 ± 0.3

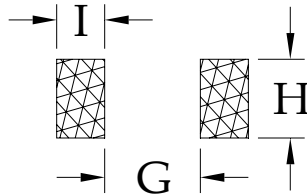
SPECIFICATIONS

Part Number	L(uH)	Tol % ±	DCR (ohms) max	Rated Current (A) (Note 1)
SDE1316-100M	10	20	0.04	2.40
SDE1316-120M	12	20	0.05	2.30
SDE1316-150M	15	20	0.06	2.10
SDE1316-180M	18	20	0.06	1.90
SDE1316-220M	22	20	0.07	1.70
SDE1316-270M	27	20	0.08	1.60
SDE1316-330M	33	20	0.10	1.40
SDE1316-390M	39	20	0.15	1.30
SDE1316-470M	47	20	0.15	1.20
SDE1316-560M	56	20	0.20	1.10
SDE1316-680M	68	20	0.25	0.97
SDE1316-820M	82	20	0.25	0.88
SDE1316-101M	100	20	0.30	0.80
SDE1316-121M	120	20	0.35	0.73
SDE1316-151M	150	20	0.40	0.65
SDE1316-181M	180	20	0.55	0.60
SDE1316-221M	220	20	0.60	0.54
SDE1316-271M	270	20	0.80	0.49
SDE1316-331M	330	20	0.90	0.44
SDE1316-391M	390	20	1.00	0.41
SDE1316-471M	470	20	1.30	0.37



Suggested PCB land pattern

- G = 4.7
- H = 3.9
- I = 2.8



Notes:

1. Based on ΔL of 10% typical or 40°C max temperature rise, whichever occurs first.
2. All test data based on 25°C ambient. Part temperature (ambient+temp rise) must not exceed 125°C under worst case operating conditions. Circuit design, components, PCB trace size and thickness, airflow and other cooling provisions all effect the part temperature.